

# NOTHING

DESIGN ERNESTO GISMONDI



**Artemide**<sup>®</sup>  
ARCHITECTURAL

# NOTHING



- created with the purpose of making the lighting fixture disappear completely into the ceiling as to solely draw attention to the lighting effects, Nothing is a complete range of recessed luminaires for AR111/12V halogen, MR16/12V halogen, PAR30/120V halogen, or MHR111 metal halide lamps
- the recessing enclosure, made of extruded aluminum, is specially designed to ensure its retention in the plaster ceiling
- 2 types: square or rectangular shape
- 5 models are available: Nothing square with 1 or 4 lamps and Nothing rectangular with 2, 3, or 4 lamps
- each spotlight may be adjusted individually with a tilt ranging from  $-20^{\circ}$  to  $+70^{\circ}$  and rotation of up to  $350^{\circ}$
- optional telescopic spotlight with tilting angle from  $50^{\circ}$  to  $+50^{\circ}$ , rotation of up to  $350^{\circ}$ , and telescopic up to  $2\frac{1}{2}''$
- recommended wall wash installation: to be set back 3 feet from the wall surface to be illuminated
- equipped with thermally protected, UL listed, electronic ballast/transformer



1



2



3



4



5

- 1. Nothing Square 1 Lamp
- 2. Nothing Rectangular 2 Lamps
- 3. Nothing Rectangular 3 Lamps
- 4. Nothing Rectangular 4 Lamps
- 5. Nothing Square 4 Lamps
- 6 + 7. Nothing Square 1 MHR  
Telescopic
- 8 + 9. Nothing Square 1 MR 16  
Telescopic



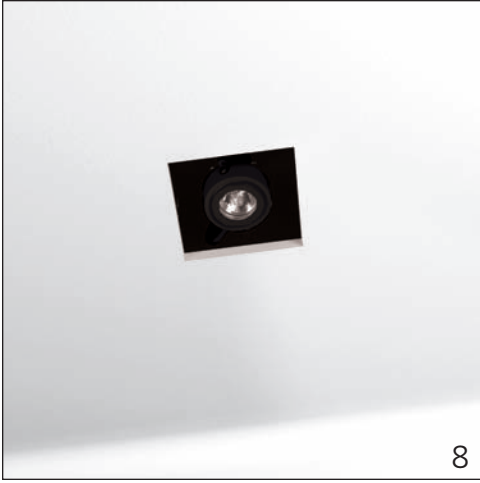
6



7

- 10. Nothing Rectangular 2 Lamps  
MR16

Telescopic and MR16 available for all different lamp configurations, Nothing Square 1 version shown.



8



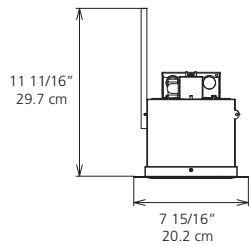
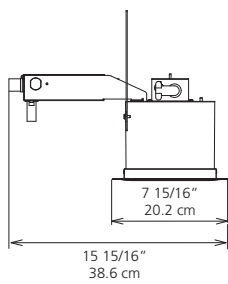
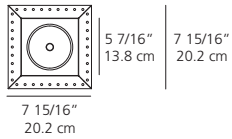
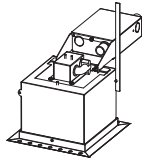
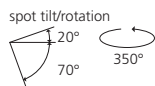
9



10

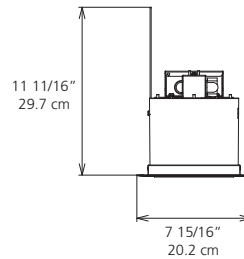
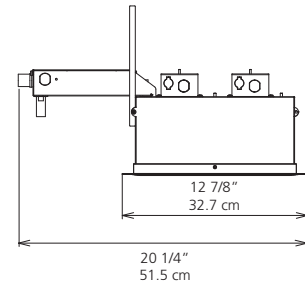
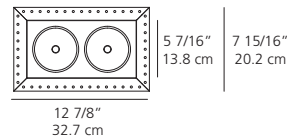
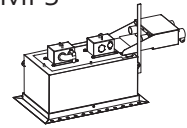
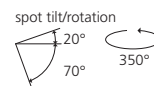
## NOTHING SQUARE 1 LAMP

cut-out dimensions  
 $6 \frac{11}{16}'' \times 6 \frac{11}{16}''$   
 17 cm x 17 cm



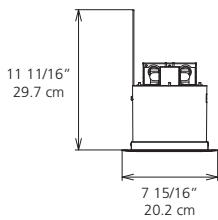
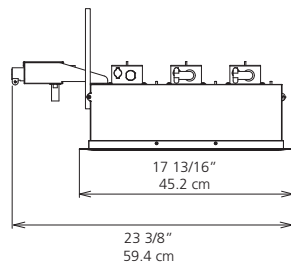
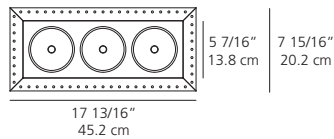
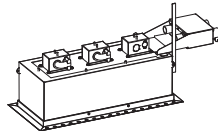
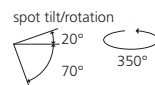
## NOTHING RECTANGULAR 2 LAMPS

cut-out dimensions  
 $6 \frac{11}{16}'' \times 11 \frac{5}{8}''$   
 17 cm x 29.5 cm



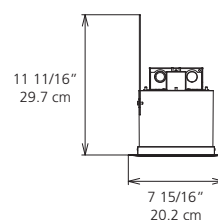
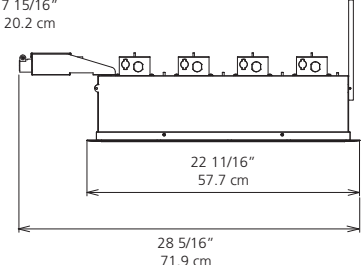
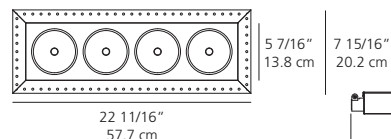
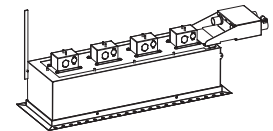
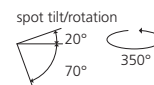
## NOTHING RECTANGULAR 3 LAMPS

cut-out dimensions  
 $6 \frac{11}{16}'' \times 16 \frac{9}{16}''$   
 17 cm x 42 cm



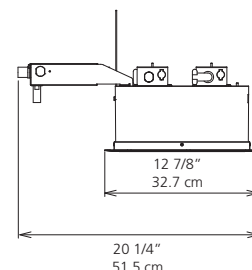
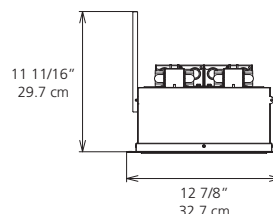
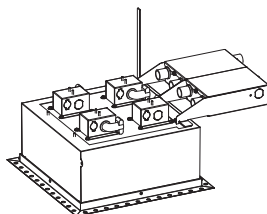
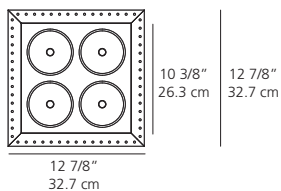
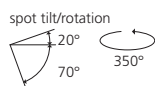
## NOTHING RECTANGULAR 4 LAMPS

cut-out dimensions  
 $6 \frac{11}{16}'' \times 21 \frac{7}{16}''$   
 17 cm x 54.5 cm

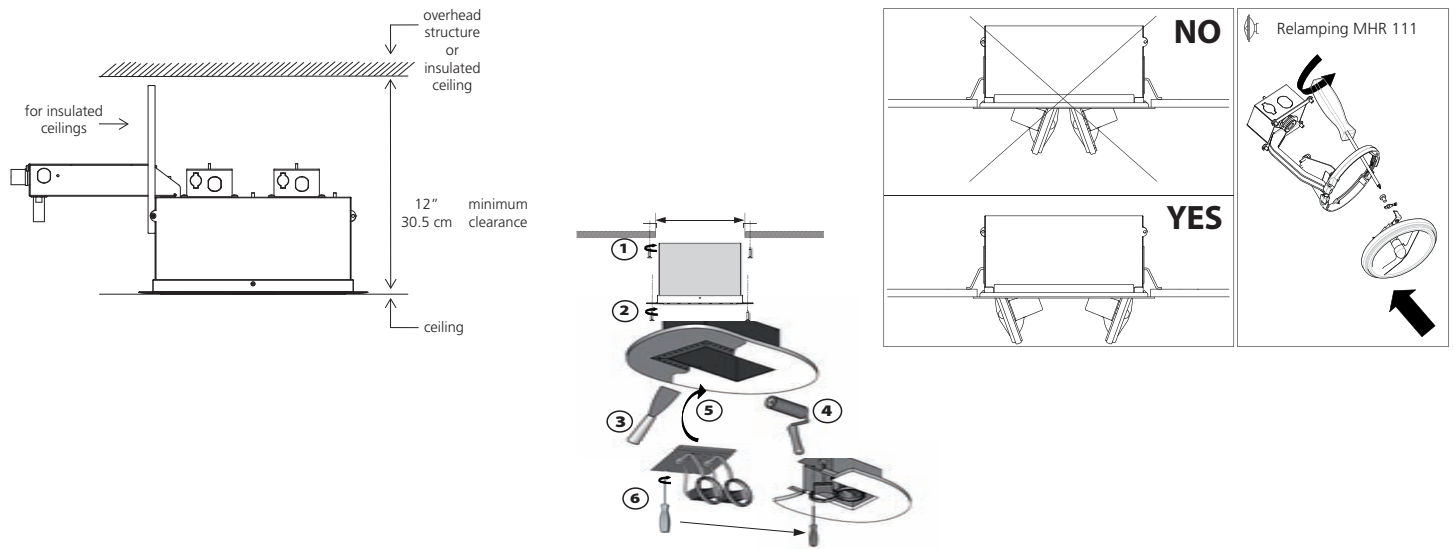


## NOTHING SQUARE 4 LAMPS

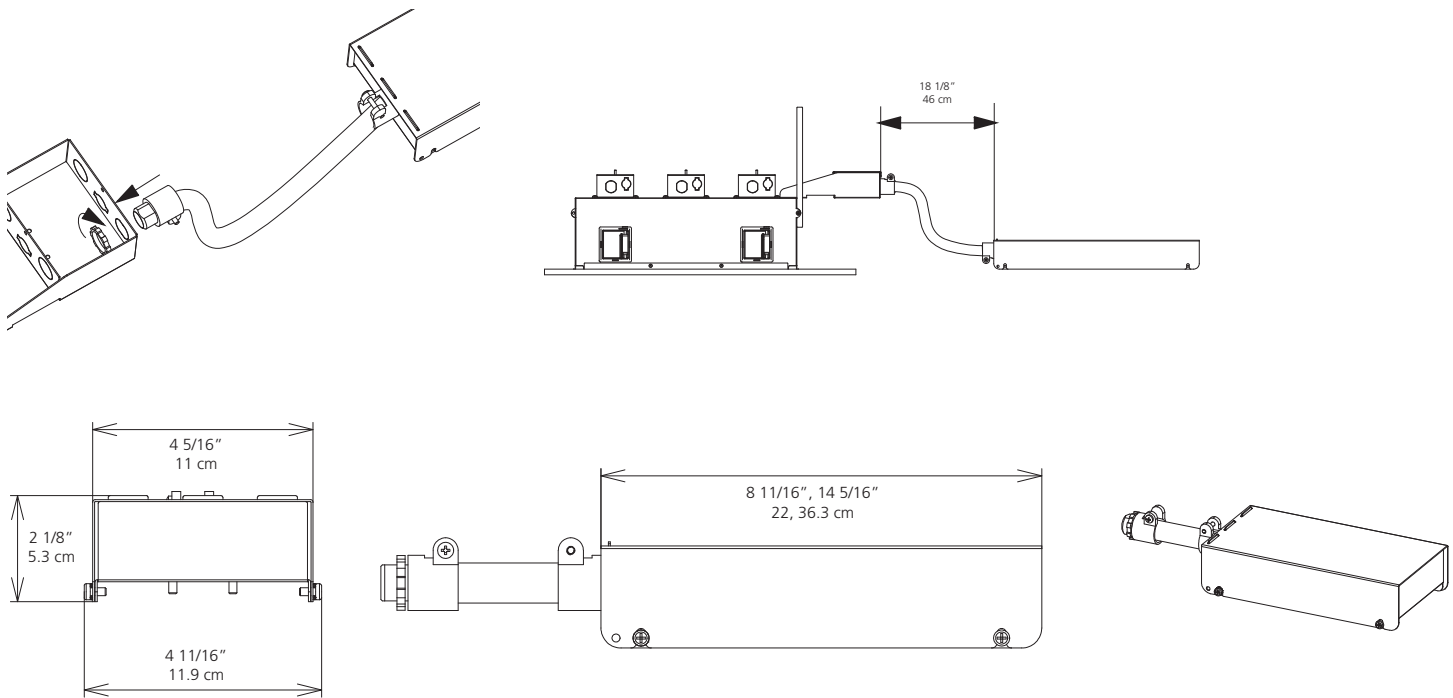
cut-out dimensions  
 $11 \frac{5}{8}'' \times 11 \frac{5}{8}''$   
 29.5 cm x 29.5 cm



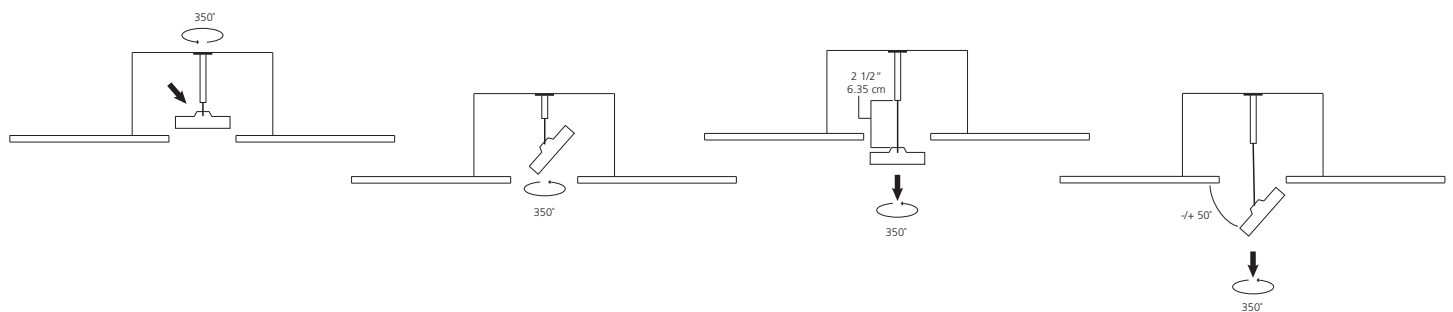
# NOTHING INSTALLATION INSTRUCTIONS



# NOTHING REMOTE BALLAST BOX (REQUIRED WHEN YOU HAVE 3 OR 4 SPOTS)



# NOTHING TELESCOPIC SPOTLIGHT



NOTHING SQUARE/RECTANGULAR RECESSED ORDERING INFORMATION IMAGES SHOWN ARE OF AR111 MODEL



Family Cat. #	Light Output	Lamp # (in cross section)	Lamp Type (if only 1 lamp)	Voltage	Ballast/Transformer/Driver/Control Box	Switching	Finish	Mounting	Mounting Type
Nothing	D							R	FSR
<p>Nothing = Nothing    D = Direct</p> <p>1 = 1 Lamp 2 = 2 Lamps 3 = 3 Lamps 4 = 4 Lamps 4SQ = 4 Lamps Square 1T = 1 Telescopic 2T = 2 Telescopic 3T = 3 Telescopic 4T = 4 Telescopic 4SQT = 4 Telescopic Square</p> <p>AR11150W = Halogen AR111 max 50W MHR11135W = Metal Halide MHR111 max 35W PAR3050W = Halogen PAR 30 max 50W (only telescopic &amp; only 120V) MR1650W = Halogen MR16 max 50W</p> <p>120 = 120 Volts 277 = 277 Volts 347 = 347 Volts UNV = Universal</p> <p>EB = Electronic Ballast (for MH lamps) TR = Transformer (for halogen lamps)</p> <p>SI = Single switching DU = Dual switching</p> <p>STD = Standard CST = Custom</p> <p>R = Recessed FSR = Flangeless Sheet Rock</p>									

Sample Order Shown Below

Family Cat. #	Light Output	Lamp # (in cross section)	Lamp Type (if only 1 lamp)	Voltage	Ballast/Transformer/Driver/Control Box	Switching	Finish	Mounting	Mounting Type
Nothing	D	3T	MHR11135W	277	EB	SI	STD	R	FSR

Not all options may be available for all models. Contact your Artemide Representative for additional information and clarification. Artemide reserves the right to change design options without notice.



ARIZONA BEVERAGE HEADQUARTERS, WOODBURY, NEW YORK



ARIZONA BEVERAGE HEADQUARTERS, WOODBURY, NEW YORK



Il piacere con il miglior  
audio al mondo.

BANG & OLUFSEN







**Artemide<sup>®</sup>**  
ARCHITECTURAL

For more information please contact [Stardust.com](http://Stardust.com)  
[Stardust.com](http://Stardust.com)