

OUTDOOR FIRE COLLECTION

stardust.com

PALIFORM



## EXPERIENCE **MODERN FIRE**

Fire pits are more than just beautiful features for outdoor spaces - they are vehicles for bringing people together. Few things are more fundamental, or more enjoyable, than sitting around an open fire with family and friends.

Paloform's outdoor fire collection adds a modern dimension to the primordial campfire with clean, elemental designs, honest materials and Certified burners - with options to suit a wide range of applications.



**BENTO** | CONCRETE

**Material:** handcast concrete

**Burner:** natural gas or propane

60,000-69,000 BTU/h, ETL listed (US & Canada)

manually lit pilot with safety thermocouple  
or electronic ignition

**Topping:** river rock or lava rock

**Dimensions:** 32" x 32" x 12.75"h



**SOBA** | CONCRETE

**Material:** handcast concrete

**Burner:** natural gas or propane

60,000-69,000 BTU/h, ETL listed (US & Canada)

manually lit pilot with safety thermocouple  
or electronic ignition

**Topping:** river rock or lava rock

**Dimensions:** 28"d x 16"h



**MISO** | CONCRETE

**Material:** handcast concrete

**Burner:** natural gas or propane

60,000-69,000 BTU/h, ETL listed (US & Canada)

manually lit pilot with safety thermocouple

or electronic ignition

**Topping:** river rock or lava rock

**Dimensions:** 36”d x 12”h





**BOL** | CORTEN

**Material:** corten weathering steel

**Fuel:** wood-burning or

optional natural gas or propane burner

60,000-69,000 BTU/h, ETL listed (US & Canada)

manually lit pilot with safety thermocouple

**Topping:** lava rock & lava boulders

**Dimensions:** 42"d x 9.25"h





## CALDERA | CORTEN

**Material:** corten weathering steel

**Fuel:** wood-burning or

optional natural gas or propane burner

60,000-69,000 BTU/h, ETL listed (US & Canada)

manually lit pilot with safety thermocouple  
or electronic ignition

**Topping:** lava rock & lava boulders; or river rock

**Dimensions:** 45" x 45" x 12"h







**BENTO 32 & 42 | CORTEN**

**Material:** corten weathering steel

**Burner:** natural gas or propane  
60,000-69,000 BTU/h, ETL listed (US & Canada)  
manually lit pilot with safety thermocouple  
or electronic ignition

**Topping:** river rock or lava rock

**Dimensions:** 42" x 42" x 12.75"h  
32" x 32" x 12.75"h





**KOMODO** | LINEAR

**Material:** Corten or Powder-coated Steel  
**Burner:** natural gas or propane  
110,000 BTU/h, ETL listed (US and Canada)  
electronic ignition  
**Topping:** river rock or lava rock  
**Dimensions:** 84" x 16" x 24"h





**ROBATA 54 & 72 | LINEAR**

**Materials:** concrete body,  
stainless steel top with cover plate

**Burner:** natural gas or propane  
60,000 or 80,000 BTU/h, ETL listed (US and Canada)  
electronic ignition

**Topping:** river rock or lava rock

**Dimensions:** 72" x 24" x 12.5"h  
54" x 24" x 12.5"h





## ROBATA CORTEN 72 & 54 | LINEAR

**Material:** corten weathering steel with cover plate

**Burner:** natural gas or propane

60,000 or 80,000 BTU/h, ETL listed (US and Canada)

electronic ignition

**Topping:** river rock or lava rock

**Dimensions:** 72" x 24" x 12.5"h

54" x 24" x 12.5"h



## MATERIALS

### CONCRETE

Paloform high-performance concrete is a proprietary blend of local materials designed to balance aesthetics, durability and sustainability. We use high-volume fly ash in our mix which results in better, stronger concrete (55 MPa) and reduces the energy footprint of our products.

Our Robata Linear Fires use an ultra high-performance blend that is even stronger and allows us to cast the large vessels with thin walls.

### CORTEN

Corten (COR-TEN) or weathering steel is an alloy that develops a stable rust-like oxidation on its surface when exposed to the elements. This layer, which continually regenerates, provides a no-maintenance finish that protects the steel from corroding.

Our Corten fire pits are manufactured from heavy gauge, 3/16" thick steel and are designed to last a lifetime. They may be used for wood-burning or specified with natural gas or propane burners.

### STAINLESS STEEL

All of our burner components are manufactured locally from 304 stainless steel which offers excellent corrosion resistance for outdoor applications.

Robata is available with a stainless steel top and cover in a brushed finish.

## BURNERS

Our burners are designed, developed and assembled in-house to ensure our quality and aesthetic standards are met. They are tested and certified by Intertek Testing Services (ETL) to CSA and ANSI standards for the US and Canada.



**CONCRETE COLOURS**



charcoal



ash



dove



walnut



chai

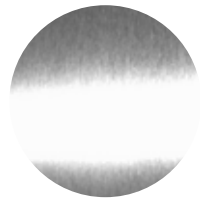


nougat

**METALS**

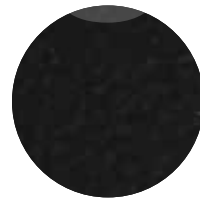


corten  
steel

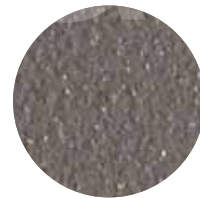


brushed  
stainless steel

**STANDARD POWDER COAT COLOURS**



black



graphite



white

**TOPPINGS**



lava rock



river rock  
dark grey



river rock  
light grey

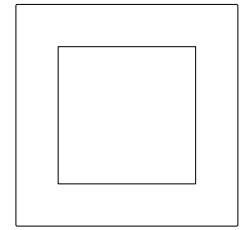
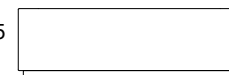
Please note: these colour swatches are printed representations only. Actual colours will vary.

**BENTO 42**  
Wt: 340 lbs

CHARCOAL  
ASH  
DOVE  
WALNUT  
CHAI  
NOUGAT  
CORTEN STEEL



12.75

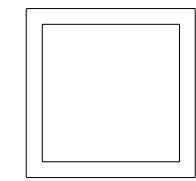


42

**BENTO 32**  
Wt: up to 340 lbs



12.75

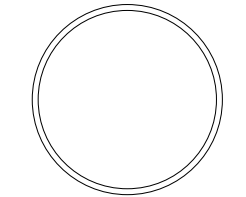


32

**MISO**  
Wt: 265 lbs



12

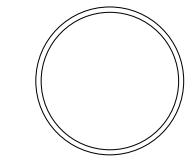


36

**SOBA**  
Wt: 230 lbs



16

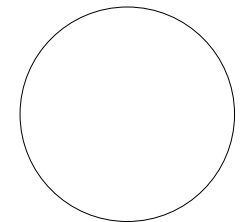
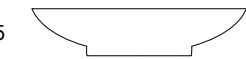


28

**BOL**  
Wt: 75-150 lbs



9.25

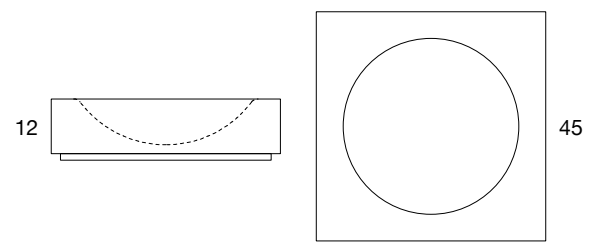


42

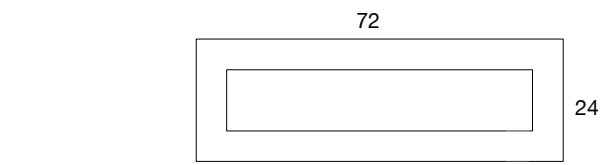
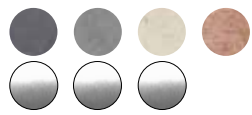


CHARCOAL + STAINLESS  
 ASH + STAINLESS  
 NOUGAT + STAINLESS  
 CORTEN STEEL  
 BLACK POWDER COAT  
 GRAPHITE POWDER COAT  
 WHITE POWDER COAT

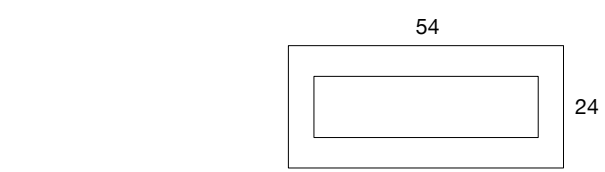
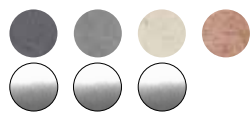
**CALDERA**  
 Wt: 230-300 lbs



**ROBATA 72**  
 Wt: up to 550 lbs



**ROBATA 54**  
 Wt: up to 450 lbs



**KOMODO**  
 Wt: up to 450 lbs

