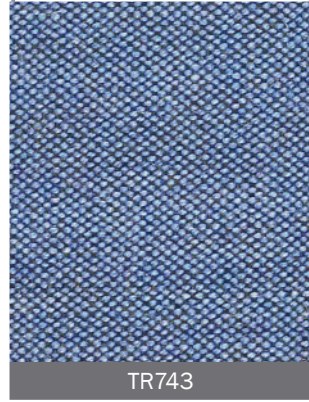
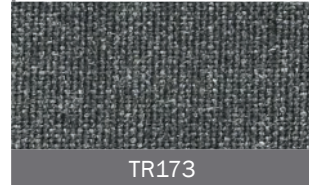


## REMIX 2



TR743



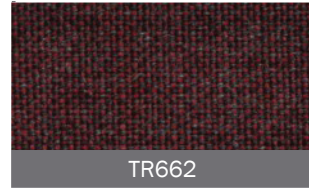
TR173



TR223



TR672



TR662



TR682

90%  
lana vergine | pure wool  
10%  
nylon

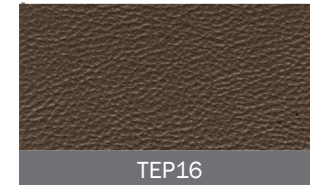
## HP



TEP29



TEP31



TEP16



TEP08

88%  
PVC  
12%  
poliestere | polyester

## LAZIO 2



TZ653



TZ162



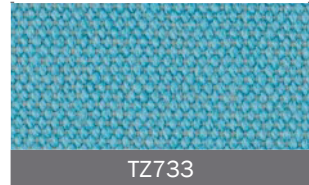
TZ123



TZ333



TZ552



TZ733

100%  
cotone | cotton

## PELLE | LEATHER



PELSLA



PELSLG



PELSLN



PELSLR

100% pelli bovine  
europee  
european cow hides

## DIVINA 3



TD224



TD191



TD106



TD691



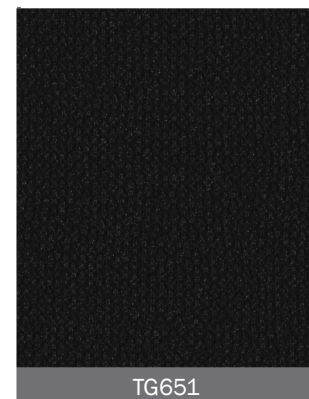
TD623



TD692

100%  
lana vergine | pure wool

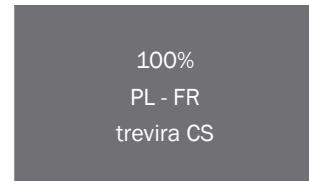
## GEMMA S



TG651

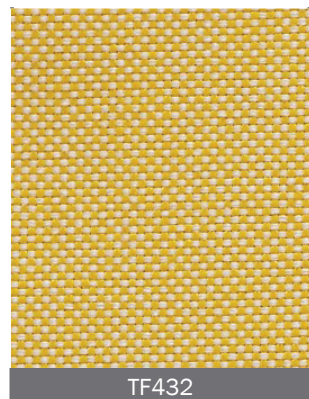


TG203



100%  
PL - FR  
trevira CS

## FIELD



TF432



TF142



TF222



TF782



TF982



TF382

100%  
trevira CS

## TESSUTI | FABRIC TYPES

### REMIX 2 | Kvadrat

415 g/mtl  
100.000 Martindale



### DIVINA 3 | Kvadrat

880 g/mtl  
45.000 Martindale



### GEMMA S

400 g/mtl  
40.000 Martindale



### LAZIO 2 | Kvadrat

620 g/mtl  
40.000 Martindale



### FIELD | Kvadrat

430 g/mtl  
>100.000 Martindale



### HP

550 g/mq  
50.000 Martindale



## PELLI | LEATHER TYPES

spessore | thickness  
1,2/1,4 mm

resistenza allo strappo | tear resistance  
>20 N | EN ISO 3377-1

**solidità alla flessione**  
20.000 cicli (nessuna rottura) | EN ISO 5402  
bending resistance  
20,000 cycles (no damage) | EN ISO 5402